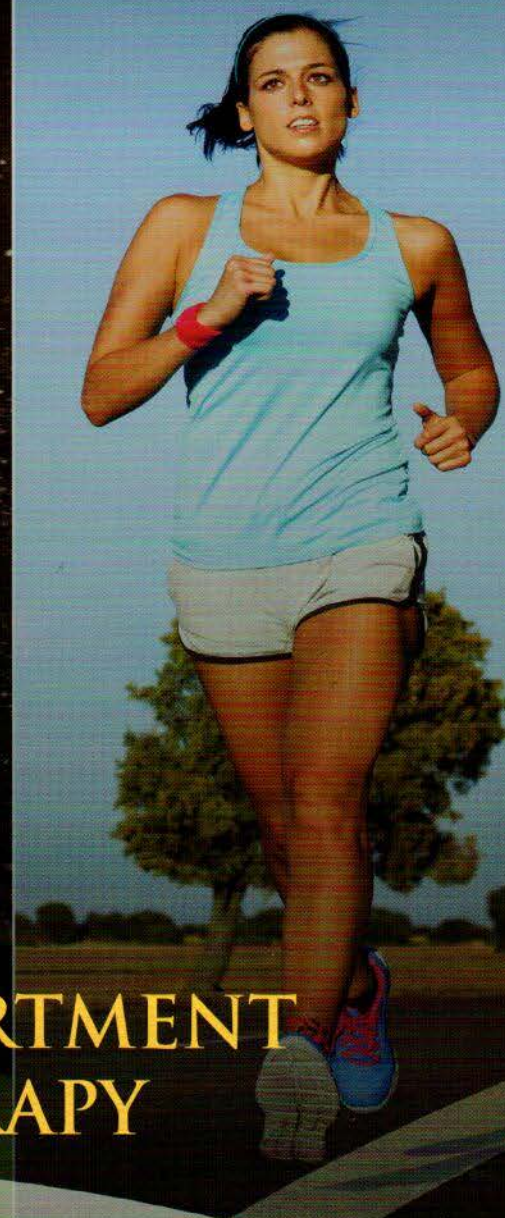




**MCGINLEY
INNOVATIONS**



**EXERTIONAL COMPARTMENT
SYNDROME THERAPY**

www.mcginleyinnovations.com

EXERTIONAL COMPARTMENT SYNDROME THERAPY

In 2011, Dr. McGinley developed a unique, non-surgical approach to diagnosis and treatment of Exertional Compartment Syndrome. This procedure is one-of-a-kind and has a patent pending. The therapy was featured nationally on NBC news.

Exertional Compartment Syndrome is an exercise-induced condition that typically causes pain in the calf muscles which is relieved with rest.

Dr. McGinley's Exertional Compartment Syndrome Therapy uses an image-guided injection into targeted muscles. Relief of symptoms occurs rapidly. Following the procedure, exercise intensity is gradually increased and patients are often able to resume unrestricted activity in 3-4 weeks.

McGinley Innovations' Exertional Compartment Syndrome Therapy is an outpatient procedure. Patients begin in the morning with a consultation and physical exam, tests are performed to confirm the diagnosis, and if positive, patients undergo treatment in the afternoon.



MVP TREATMENT

MCGINLEY VASCULAR PRESSURE TREATMENT
FOR VASCULAR COMPRESSION SYNDROMES
www.mcginleyinnovations.com

JOSEPH C. MCGINLEY, MD, PHD
Board-Certified Diagnostic Radiology
Fellowship in Musculoskeletal Imaging & Intervention

Dr. Joseph McGinley is a fellowship trained, Musculoskeletal Radiologist and Sports Medicine Physician with graduate degrees in both Mechanical Engineering and Physiology. Dr. McGinley is also the Founder and CEO of McGinley Orthopaedic Innovations, an orthopedic medical device company. Dr. McGinley holds several issued and pending patents for various medical procedures and devices related to orthopedic medicine and medical imaging.

MVP FLEX



The MVP Flex is a device designed to diagnose and guide treatment of vascular compression syndromes. It simulates vascular compression syndromes of the legs, including Exertional Compartment Syndrome and Popliteal Artery Entrapment. It is utilized during CT scanning. The CT images generated using the MVP Flex allow for easy identification of abnormal vascular compression within the legs.

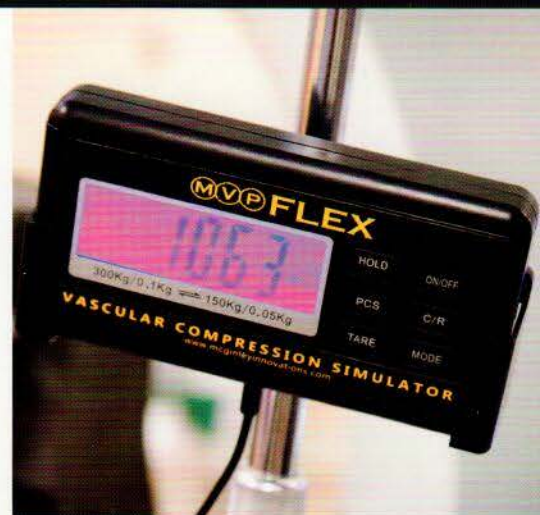
The MVP Flex is easy to use and is positioned directly on the CT scanner table. The patient lies on top of the soft medical grade pad and plantar flexes his/her feet against the load sensor. The adjustable straps allow for the proper positioning of patients of any height/size. A digital readout ensures adequate activation of the calf muscles, and it can be reproduced on subsequent scanning. The MVP Flex is durable and compatible with nearly all CT scanners.

This Procedure has been featured nationally on NBC News.



PATIENT BENEFITS

- Patent-pending diagnostic and treatment protocol
- Same-day diagnosis and treatment available
- Injection technique; walk out of the office after treatment
- Outpatient procedure; no hospital stay
- Resume full activity in as little as 3 weeks



If you have a patient who has previously undergone surgery for Exertional Compartment Syndrome and symptoms have returned, this procedure may help alleviate their pain.



TO REFER A PATIENT FOR CONSULTATION OR TO OBTAIN LICENSURE AND TRAINING IN THIS TREATMENT PLEASE CALL 307-315-6419, VISIT WWW.MCGINLEYINNOVATIONS.COM OR SEND AN EMAIL TO MCGINLEY@MCGINLEYINNOVATIONS.COM